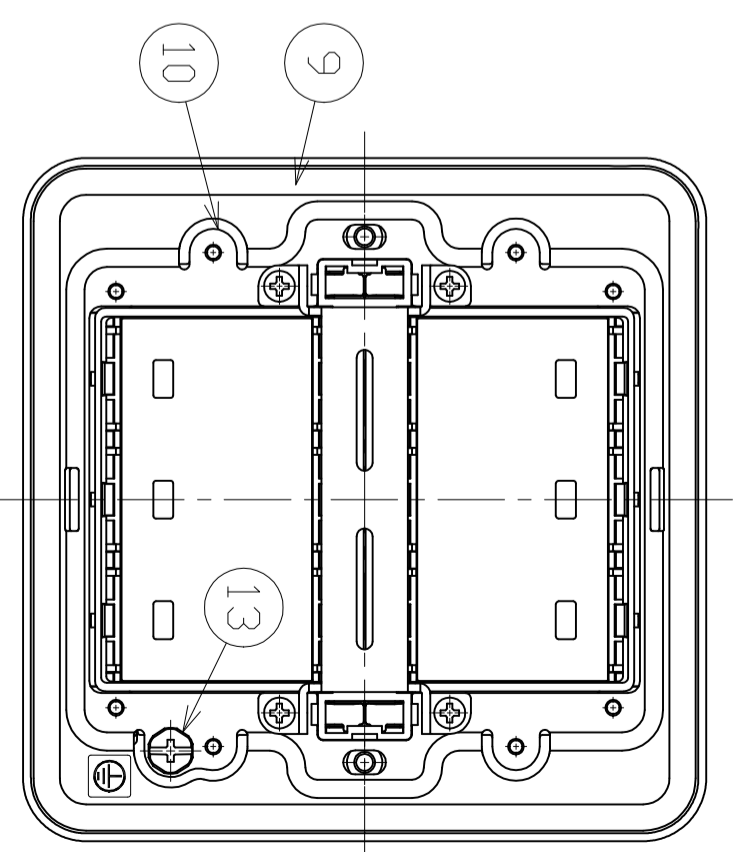
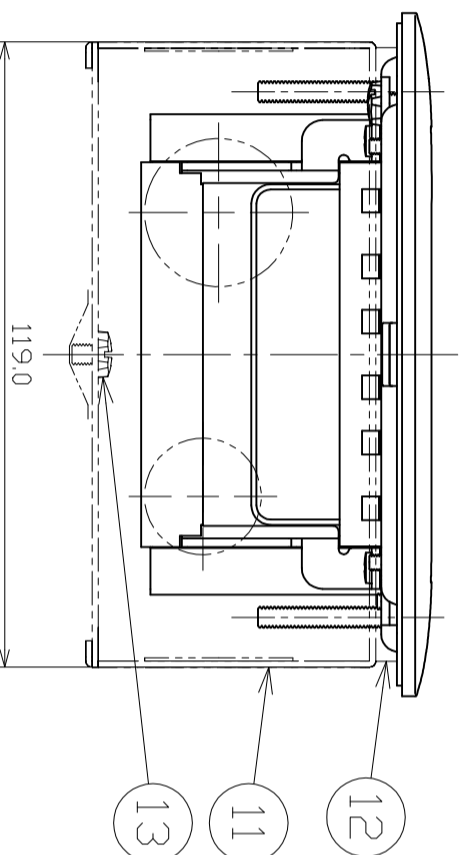
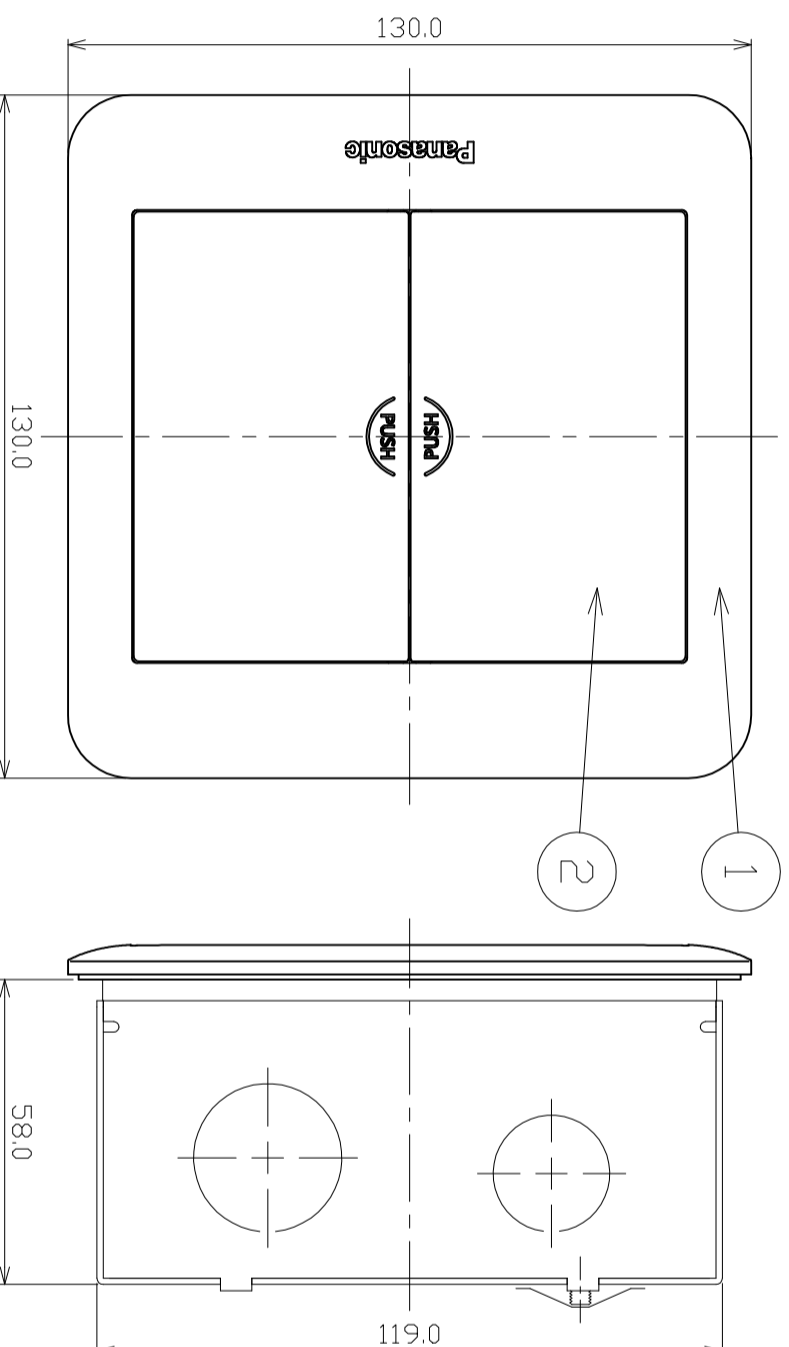
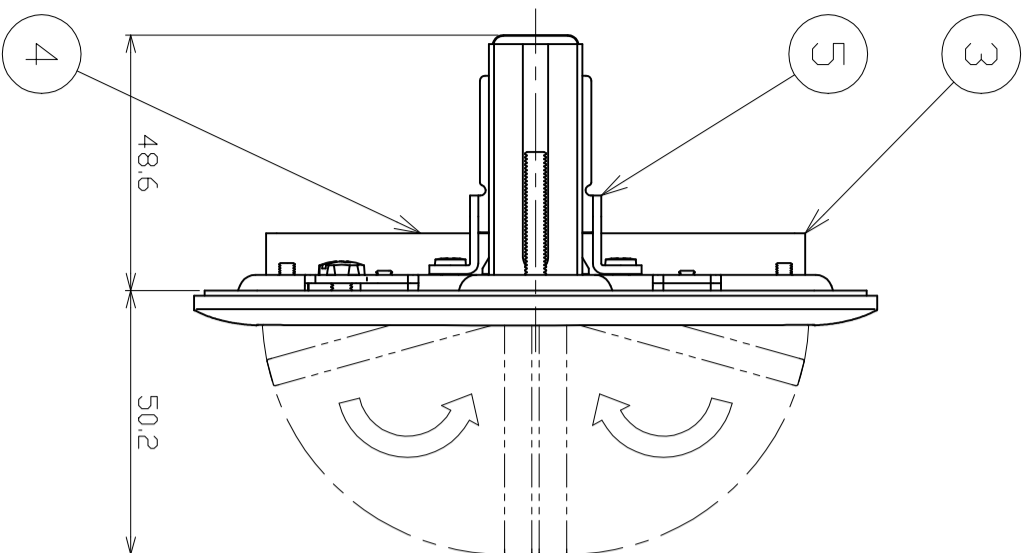
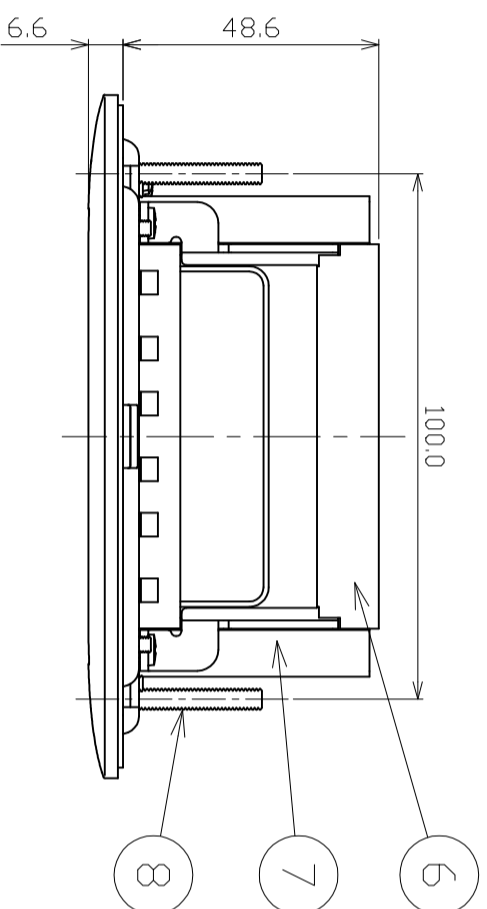


FOR CUSTOMER



[Note]
 3. Installation unit (Box set) must be specific for only this product.
 2. Try to understand installation and instruction manual before install and use this product.
 1. This product an applicable for Panasonic brand wiring device only. Do not use this product with other brand wiring device.

13	EARTH SCREW	STEEL - M4X5	2
12	BOX PROTECTOR	HDPE	1
11	OUTLET BOX	STEEL	1
10	CORE PLATE	STEEL	1
9	GASKET	C-4305(BK)	1
8	SETTING SCREW	STEEL - M4X20	2
7	STORAGE FOR COVER	PC+ABS	1
6	INSULATION SHEET	LUMIRROR-X-30	1
5	SUPPORTING	STEEL	1
4	BRACKET (WIDE SERIES)	PC+ABS	1
3	BRACKET (WIDE SERIES)	PC+ABS	1
2	COVER	ADC-12	2
1	FLOOR PLATE	ADC-12	1
ITEM		PART NAME	DESCRIPTION & MATERIAL
APPROVE BY		REVIEW BY	CHECK BY
DRAWING BY		REMARK	

ITEM NO.	DIVERSE ITEM NO.	MATERIAL	WEIGHT	QUANTITY	SCALE	DATE
DUMF3200L TK	DUMF3200LT-1	-	-	1	1:1	2015/04/09
PRODUCT NAME	FLOOR OUTLET DOUBLE DUPLEX	PART NAME	BLANK (WIRING DEVICES FOR FULL-COLOR WIDE SERIES)	DRAWING NO.	DW-MA-A0101-Z	